

# WATERCOLOR SOCIETY Of INDIANA

April, 2008

4181 E. 96th Street, Suite 200  
Indianapolis, IN 46240  
Phone: 317-814-6194 x150  
Fax: 317-814-6016  
Email: [wsiemail@ori.net](mailto:wsiemail@ori.net)  
[www.watercolorsocietyofindiana.org](http://www.watercolorsocietyofindiana.org)

## Words from the President:



Dear Fellow Artists,

I hope that the first quarter of 2008 has been pleasant and productive for all WSI members. I want to let you know how pleased I am to be your new president. I was first introduced to this organization back in the mid-eighties by former WSI president, Betty Wade. It was then that I started attending the annual juried show when it was held at Block's Department Store in downtown Indy. Years later, at the suggestion of JoAnn Cardwell, I joined WSI, which turned out to be a great recommendation. As your president, I will certainly try to deliver the same quality of leadership as all of my predecessors. They have done a tremendous job through out the history of WSI.

The new Board of Governors was introduced at the February meeting. Many thanks to Betty Boyle and her crew who provided some delicious snacks for everyone to enjoy that day. I am very impressed with this years board members. I've worked with all of them in the past and know that they are a great group of volunteers. Please consider assisting them as a committee member, you will undoubtedly find it very rewarding. The success of WSI depends on your involvement.

New this year is the formation of a Patron's Committee consisting of Marianne Glick, Becky Taylor, and Ted Englehart. They have been working very hard with some new exciting possibilities for WSI. Their enthusiasm is very impressive, and I am sure they will have some great developments for the organization.

Also, be on the look out for information on upcoming workshops the next few years. Pat Grabill is working very hard to organize several workshops and seems to be working non-stop. Great job, Pat. Keep an eye on your email and newsletters for up and coming workshops. Consider volunteering as a workshop monitor, it's a great way to get involved. And, remember our membership drive this year. The winner at the end of 2008, will get to take the workshop of their choice in 2009. So, get busy!!!! Remember our motto, *No artist left behind.*

I hope you have all had a chance to check out the new WSI website at [www.watercolorsocietyofindiana.com](http://www.watercolorsocietyofindiana.com) which launched February 9th, coinciding with the first membership meeting of 2008. Marie Stonestreet volunteered many long, hard, hours to design the new site and deserves many thanks. She has done a terrific job.

Be on the look out for mailings regarding the upcoming Membership Show and Juried Exhibition. Doris McKee is organizing the Member's Show for June 7th. Please plan on to attend even if you are not going to hang a painting. It is truly a great day for WSI. Becky Taylor will be demonstrating after the luncheon. Sandy Ezell is already working hard on the Juried Show for this Fall. The due date for slides will be soon upon us, so start finalizing your entries.

As usual, WSI is off to a running start this year, and there are great things on the horizon. I encourage all of you to get involved by volunteering to serve on a committee. I know you will find it very rewarding. I did.

Sincerely,  
Mark Lemons

## Features:

- **Member Show Prospectus**
- **2008 Annual Workshop by Betsy Dillard Stroud**
- **Vanity Art Galleries by Joyce Jensen**
- **Membership Demo by Becky Taylor**
- **Peggy Brown Workshop**
- **Two Better Halves by Becky Arvin**

## Welcome New Members

Rita Boje  
Barbara Butz  
Connie Edwards  
Sara Anne Hook  
Joann Loftus

Lucy McGrath  
Pam Moore  
Kaarta Nemeth  
Carol Tully  
Arlene Wheeler

## 2008 Calendar

**April 21** Second Board Meeting, WSI Office, 9:30am  
**May 3** Dayspring Center, Education Outreach  
**May 30** Membership Exhibit Entries due  
**June 7** Dayspring Center, Education Outreach  
**June 7** 2nd General Meeting, Demo  
Painting delivery 10-12, Luncheon-OneAmerica  
**June 7-28** Membership Exhibit at OneAmerica  
**Mid June** - 3rd Quarterly Newsletter  
**June 19-21** Peggy Brown Workshop, Nashville, IN  
**June 28** Membership Exhibit painting pick-up  
One America, 10am-noon  
**July 5** Dayspring Center, Education Outreach  
**July 11** Deadline for slide return to office  
**July 20** Summer Social Pitch-In, General Meeting,  
Juried Exhibit Slides, Lawrence Library, 1:30pm  
**August 2** Dayspring Center, Education Outreach  
**August 18** Third Board Meeting, WSI Office, 9:30am  
**Sept. 6** Dayspring Center, Education Outreach  
**Aug. 25– Sept 3** Painting delivery to WSI Office  
8:30-5:00, M-F  
**Sept. 9-13** Five-day Workshop, IAC, Betsy D. Stroud  
**Sept. 10** Slide lecture by Betsy Dillard Stroud  
IAC Auditorium, 7:00 pm  
**Sept. 28** Juried Exhibit Opening Reception  
Awards Ceremony, IMA, Time TBA  
**Sept. 28–Oct 25** Juried Exhibit open at IMA  
**Oct. 4** Dayspring Center, Education Outreach  
**Mid Oct.** 4th Quarterly Newsletter  
**Oct. 25** Juried Exhibit painting pick-up, IMA 1-3pm  
**Nov. 1** Dayspring Center, Education Outreach  
**Nov. 6-8** Marilynn Derwenskus 3 day Workshop,  
New Directions in Watermedia, Location TBA  
**Nov. 10** Fourth Board Meeting, WSI Office, 9:30am  
**Dec. 6** Dayspring Center, Education Outreach

## 2008 Membership Directories

Membership Directories have been updated for 2008. They will be available at the June membership meeting. If you would like a copy, please call (317-814-6194) or email Valerie (wsiemail@ori.net), and she will mail one to you.

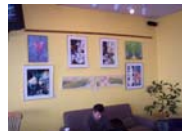
## Two Better Halves by Becky Arvin

I first began a large watercolor thinking I would paint flowers. After working on it for at least two days, I decided that I liked parts of it but felt that the watercolor was not working as a whole painting. I studied the painting both up close and at a distance, wondering how I could save it. The colors were vibrant with purple, yellow, red, and white flowers, so I decided to do a first for me--I cut the painting in half! I then began painting the left half first and added oriental paper to the right half for texture to improve the painting. The left painting was the only one I matted. I gave it the title, "Miracle Garden I," and placed it in the Nashville Gallery in Brown County where I have been renting a wall at the gallery since September, 2006. I sold "Miracle I" the next month!!!

The right half I treated differently by matting and framing it, and I entered it with several other watercolors of mine in the 2006 Riley Festival in Greenfield. I won a second place ribbon for that painting, which I called, "Miracle Garden II." I sold "Miracle Garden II" February 29<sup>th</sup> on the same day I picked up my 25 watercolors from the Greenfield Banking Company.

With watercolors, we can spray it, salt it, razor blade it, oriental-paper it, run it under the faucet, tilt it, splatter it, and now we can even cut it in half!!!

## Exhibit space at Eagle Creek Coffee Company



WSI is exhibiting at Eagle Creek Coffee Company on Main Street in Zionsville and is taking reservations for 2008 and 2009. You would hang paintings on the first of the month and take them down at the end of the month. Great location, high traffic, good food, wonderful coffee!

**July, 2008 is still available.** You may also reserve a month in 2009. Call Valerie (317-814-6194 x 150) or email (wsiemail@ori.net) to reserve a month.



## Pick up your paintings after an exhibit!

**The Board voted to raise the transportation fee for bringing paintings from an exhibit to the office to \$25 per painting.**

Please remember to pick up your painting! Our area representatives can help or you can call another member to make an arrangement for delivery or pick-up.

## The Workshop Response by Pat Grabill

The WSI Board and Executive Committee decided not to hold Art After Dark in 2008, and determined instead to offer a series of workshops throughout the year to give Indiana Watercolor Society members the opportunity to learn from each other and to help with expenses. In the survey mailed to the membership, more than one person commented that we needed to encourage more educational opportunities for our members. Therefore, we made the Workshop decision.

Members who returned the survey reminded us about the mission and purpose of WSI:

- ✦ to promote a strong awareness of, and interest in Indiana watercolor painting;
  - ✦ to further the interest of painters in watercolor by sponsoring programs and competitive exhibits;
  - ✦ to encourage the study of watercolor by art students and others engaged in the visual arts;
- and to establish the highest aesthetic standards in the field of watercolor painting.

The first workshop was planned for March at the Cool Creek Nature Center. Several members had requested a *plein air* workshop, and Jeanne McLeish, a wonderful *plein air* teacher, agreed to teach this first workshop. Unfortunately, the weather failed to cooperate, and we had to cancel the workshop since only five people signed up, and we needed ten enrollees to cover expenses.

We co-sponsored the **John Salminen** workshop with the Indiana Artists' Club, and that workshop was held from April 2-4, 2008. Twenty-four Indiana Artists Club and WSI members attended the John Salminen workshop. Those of us who attended will attest to the excellence of John's teaching.

When I agreed to assume the Workshop position on the Board, I knew that I wanted to reach out to those members who do not live in Indianapolis and perhaps make it easier for them to attend a workshop closer to their homes. Therefore, our next workshop will be in Nashville, Indiana, from June 19-21, and it will be taught by the talented **Peggy Brown**. Peggy is delighted to be able to teach in the town where she lives, and the workshop has enough people registered to allow it to take place. There are still places available for more students, but registration is limited. If you are interested, please fill out the registration form and return it and your check to Val at the WSI office to save your place.

On August 8-9, **Sandy Ezell** will present a two-day workshop at the Hamilton County Artist Center in Noblesville. Sandy's workshop will be about painting watercolor on yupo and other papers. I'm calling it Yupo, Etc.!, and I'm looking forward to taking it myself!

Our juror for this year's juried show is **Betsy Dillard Stroud**, and her workshop will be at the Art Center from September 9-13, 2008. The juried show itself opens on September 28.

In November, **Marilynn Derwenskus** will return to Indianapolis from her new home in Chicago and teach a workshop she calls "New Directions in Watermedia." Her workshop will be from November 6-8 at the Hamilton County Art Center.

**Rob O'Dell** has agreed to teach a June, 2009, workshop in Ladoga, Indiana,--an easier destination for those who live west of Indianapolis. Rob is a talented and generous teacher and the teaching space he uses in Ladoga is airy, bright, and spacious.

We also hope to be able to reschedule the *plein air* workshop in 2009.

Some members have suggested bringing in well known artists from outside of Indiana. We have two such artists this year in John Salminen and Betsy Stroud. However, we also have wonderfully talented artists in Indiana who would be happy to share their talent and expertise with us. I'm reminded that when I was teaching (for 30 years), other school systems paid me to present writing workshops in their schools, but in my own school system, only my students and department members were interested in hearing what I had to say. It's the old adage about an "expert" being someone with a briefcase (in our case, a portfolio!) who is at least 25 miles from home. I hope that we can utilize our own WSI experts in this workshop endeavor, and that members will support the workshops by attending them. If you are interested in teaching a workshop, I hope that you will contact me at [ptgrabill@sbcglobal.net](mailto:ptgrabill@sbcglobal.net), or call me at 317.578.0676.

Those of you who have email addresses have been receiving email notices from me about upcoming workshops sponsored by WSI. If you would like to be on the email list, please email me with your address, and I will add you to the list.

Thanks for your input and support.

## Salminen Workshop, April 2-4



The Watercolor Society and the Indiana Artists Club co-sponsored a workshop taught by John Salminen. It was held at the Indianapolis Art Center from April 2–4. John Salminen gave a slide lecture on Thursday evening, April 3. We thank **John Lefelhocz** for the many hours he donated to organizing the workshop and thanks to **Bob Bratton** for providing “host” duties during the workshop. Several of the workshop participants have voiced their favorable impressions of the week.

Ryan Petrow attended the workshop and wrote, “John Salminen is fantastic! He is very personable and throughout the day he shared several funny stories and jokes to drive home a point. We had a lot of quality one on one time with him. He is a genius in my opinion and he shared it with us in a very effective way. I learned a lot and had a blast doing it.”

From Carol Griffith: “It was the best workshop I have ever attended. Very well run, and you could tell that John had been an art teacher for over 30 years. He had a wonderful teaching approach. He never uttered a negative statement of any kind. He positively reinforced each and every participant. Every one of the 24 paintings could have been framed and put on exhibit even though some weren’t quite finished. It would have made a great show. No two alike in any way. I can’t say enough about this workshop!”



Bob Bratton wrote: “John Salminen was a wonderful teacher and delightful person.”



And finally, from Deb Shoptaw, “The John Salminen workshop was AMAZING! He is a wonder teacher as well as a wonderful artist- we were really busy all 3 days, but it was such fun and he packed so much information and creativity into a short time! I hated for the workshop to end!”



### Back by Popular Demand....

### New Member Contest

### Win Free Admission the Workshop of your Choice in 2009

WSI has decided to emphasize education and will offer a series of Workshops for the remainder of 2008 and also in 2009. The **New Member Contest** will be a wonderful opportunity for one of you to attend one of the WSI workshops at no charge. Each WSI member is asked to recruit new members (people who have never been members) to join WSI. Each new member you recruit will sign the Membership Application “Referred By” line with your name. The new member will be added to your total. **At the end of 2008, the person with the most recruits will have the opportunity to choose to attend any one 2009 Workshop at NO CHARGE!** This is a great opportunity to learn, meet other artists, and grow yourself and WSI. The lowest cost of recent and future workshops is over \$200, so it is a wonderful prize.

Recruit your friends, neighbors, acquaintances, students, and art lovers! Have them join WSI and list your name as the referral source. We do the rest. You will be able to choose any workshop that fits your schedule during the 2009 calendar year if you bring in the most WSI members in 2008.

## Membership Application 2008

Date: \_\_\_\_\_ Home Phone: \_\_\_\_\_

Name: \_\_\_\_\_

Address: \_\_\_\_\_

City

State

Zip

County

Email: \_\_\_\_\_

Referred By: \_\_\_\_\_

Please make checks payable to: **Watercolor Society of Indiana**  
4181 East 96th Street, Suite 200  
Indianapolis, IN 46240

### Membership Type

Patron \$75

Artist \$60

Call For Student Rate

### Sponsorship Level

Bronze [ ] \$75

Gold [ ] \$160

Silver [ ] \$100

Platinum [ ] \$1000

## Demonstration by BECKY TAYLOR

### Membership Exhibit, OneAmerica

June 7, 2008



We are very fortunate to have Becky Taylor for our demonstration artist at the 2008 Membership Exhibit. The day will begin with painting drop off from 10 am until noon. Lunch will be served followed by a brief General Membership meeting in the auditorium. Becky will be the highlight of the day with her demonstration beginning around 1:30 pm.

Becky began taking oil painting classes in 1978 and became enamored with art in all mediums. Watercolor has been her favorite but she has also enjoyed staying with her oils.

Becky chooses to paint subjects that soothe and renew her spirit as well as her viewers. She paints mostly representational art and responds to the moment with pure joy. She views her work as a fulfillment of her life's purpose rather than a profession. Flowers, gardens, and landscapes are her favorite subjects.

Her professional memberships include the following: Indiana Artists Club-Signature member and past board member; Hoosier Salon-award winner; Michigan Watercolor Society and the Watercolor Society of Indiana- Signature member, past President, Treasurer and Executive Vice-President.

Recently she was accepted by Giclee Publisher's in Maui, Hawaii. They are publishing and selling her art. You may see her work at [www.imagestationart.com](http://www.imagestationart.com) [www.iluvart.com](http://www.iluvart.com), and [www.BeckyTaylorArt.com](http://www.BeckyTaylorArt.com).

Becky teaches private and group lessons. She also holds local workshops. She also teaches adult education at J. Everett Light Career Center and Lawrence North in Indianapolis. Becky has been Artist in Residence at several area schools.

She is represented in private and corporate collections throughout the United States and foreign countries and galleries here and in Michigan. Her work can also be viewed at her studios by appointment only.

Becky resides mostly in Pentwater, Michigan, but also maintains her residence in Indianapolis. She commutes to Stamford, Connecticut to spend time with her young granddaughter.



### Chat with an Artist Program

The IMA has approved the Chat with an Artist Program for a second year. We would like to have artists painting at the IMA all day on Saturdays and Sundays during the exhibit.

This means we would need four artists for each weekend (Saturdays 11-2 and 2-5 and Sundays 12:00-2:30 and 2:30-5:00). Any artist may register for this opportunity but priority will be given to Cardinal Fellows and Signature members.

Check your calendars! This is a wonderful, low pressure opportunity to meet all ages who have an interest in art and to represent the WSI. Call Linda Halcomb at 317—547-8812 or email her at [twc3175478812@earthlink.net](mailto:twc3175478812@earthlink.net) if you are interested. You may also contact Valerie at the office to sign up. ([wsiemail@ori.net](mailto:wsiemail@ori.net))

## Education Outreach—Monthly Dayspring Activity



In February, Karen Fehr, Marcia Reller, and Linda Halcomb helped two families and three teens make mono-prints. During this time we met Mitchell. Mitchell is a teenager who loves art. He takes art classes at his high school and told us about his previous experience making mono-prints. He proudly described how he had subtly blended the edges of his rose petals to make a realistic print. During our time with him, Mitchell made four abstract mono-prints that were so promising that Marcia found construction paper and cut mats for his works. We left Mitchell with all of the materials to be able to make more mono-prints after gaining approval from the shelter management.

This type of encounter is what makes volunteering with our Outreach programs so rewarding.

Dayspring's "Adopt A Room" project is currently under way. They are renovating the 14 client "bedrooms" and hope to have them completed by the end of spring. They will then begin on the hallways and the family room. The floors of the entire upstairs and shelter have been completely renovated. They expect to be ready for us to hang our community arts donations in May.

Their Executive Director, Lori Casson says, "I am very excited about the donation of original watercolors. I know it will help brighten the atmosphere immensely." WSI currently has four watercolors that have been donated for the Community Arts Program. If you would like to donate an original work or a print of your watercolors we will make certain it is hung securely. Sandy Ezell has donated the security hooks, and we thank her for her help obtaining them.



### New Opportunities

We have been contacted by two organizations about participating in new Outreach programs. If you are willing to volunteer some of your time (even if it is only one time), please let Valerie know. Without more volunteers we cannot expand our programs, and please know that your efforts are truly appreciated.

### Member News

**Mary Louise Johnson** is semi-retired. She still has a stock of frames and art supplies from her gallery. These items are for sale. Please call her if you are interested. 317-786-0805.

**Mary Gretsinger, WSI, KWS**, will be teaching watercolor classes in Columbus, Indiana, during the months of April and May. She regularly exhibits statewide, nationally, and internationally, and she has also won first place in Kentucky Watercolor's national exhibit, Aqueous USA 2006. Please call her at (812) 342-3431, or contact her at [gretsinger@att.net](mailto:gretsinger@att.net) to inquire about scheduling.

**Mark Lemons** will have a solo show at the Indianapolis Art Center in June, 2008.

**Sue Semenick** and **Axie Frey** exhibited at Eli Lilly in Lafayette from Feb15th through March 21st.

**Mert Strain** and **Axie Frey** will be touring Greece with Wisconsin watercolor artist Joye Moon during the last two weeks of April.

**Carol Griffith** was featured in an article in the *Noblesville Daily Times* March 13. Carol, a WSI member and member of the Riviera Camera Club, organized this show in an effort to "present photography as art." She said there are some wonderful photographs in this exhibit and that they show the breadth and quality of work that the club members produce. While the majority of members concentrate on landscape and nature photography, there is also involvement in photojournalism, portraiture, architecture and more. Most have also moved into digital capture; however, several continue to pursue traditional film photography.

**Linda Halcomb** currently has nine paintings being exhibited at Midday Gourmet Catering and Deli. She will have 20-30 at Lulu's Electric Cafe during April and will be exhibiting ten paintings at Barnes and Noble - Clearwater in May.

The "Do You Speak Art?" special interest group of The Association of International Women recently toured the framing shop and studio of **Sandy Ezell**. Sandy performed a demonstration using yupo paper. The group was fascinated by Sandy's history, techniques, and innovation.

**Doris Turnbaugh** and **Ray Stevens** exhibited together at Indiana University East in The Gallery from Jan. 14– Feb. 15.

**Bonnie Draher** has donated a painting to St. Vincent's hospital for each of the last 12 years!

**Carol Conrad** was featured in a full page article in the March issue of *Indianapolis Woman*. Carol describes her program to introduce art to children at-risk in the Indianapolis area. Learn more at: [www.koart.us](http://www.koart.us)

## VANITY ART GALLERIES by Joyce Jensen

This is something that many, or even most of you, already know, but it was new to me. Since setting up my web site, I've been approached via e-mail by art galleries that "love my work," want to set up relationships, etc. My antennae go up: Suspicious!

I used to be a paid writer for local magazines and organizations, and I've had several short stories published in legitimate outlets, for which I was also paid. But one thing writers learn about fast is vanity presses and dishonest agents, who will happily publish your work . . . for a substantial fee.

I'm self-publishing a little book of my art, so I'm not against self-publishing. It can be a great way to produce stuff to sell at art fairs, or make gifts for family, friends and patrons, and so on. I'm doing the layout and design, so the only expense is my time. I pay by the copy and can print only one copy if I want, so expenses are low and I'm not paying anyone a fee.

Back to art galleries. After receiving the latest e-mail, I visited the gallery web site. They had offered to exchange links—they'll link to my web site if I link to theirs. Among their temporary new links, along with mine, were others from the WSI link page, so that's how they found us. They have hundreds and hundreds of artist links. I checked out a few; some are good, some aren't. This gallery will link with anyone, so I decided not to add them to my web site.

Then I did a web search and read comments from chat rooms. A great learning experience! Naive me learned that vanity art galleries are big business, like vanity presses. For huge fees—people mentioned thousands of dollars up front—these outfits will include your work in "shows," which really means they'll rent you wall space, or publish "catalogues" of your work, and so on. It's a scam.

I guess I'll just have to find fame and fortune the old-fashioned way.

## February General Meeting and Presentation about Giclee Printmaking



The first General Meeting was held on Saturday, February 9, at the Nora Library. It was attended by more than thirty artists. **Betty Boyle**, our Chairperson for this meeting, provided a lovely table of sweet treats which were enjoyed by all. A favorite of the day was Betty's "Forgotten Kisses." We have included the recipe. We thank **Sandy Ezell, Carol Griffith, Linda Halcomb, and Rosie Southworth** for the contributing other goodies.

The 2008 Board President **Mark Lemons** was introduced by outgoing President, **Connie Huibregtse**. The remainder of the 2008 Board was introduced and a brief meeting was held. Door prizes were won by **Joan Roe, Ted Englehart, Sandy Ezell, Jean Jackson, and Connie Huibregtse**.

Mary Hamilton Shaw and Robert Eagerton from Heartland printworks, a subsidiary of Virtu Fine Arts Services, presented a program about Giclee print making. The scanner they use is considered the finest scanner in the world, with the ability to scan images that are almost identical to the original. It is capable of scanning original objects as large as 59 x 96 inches in outside dimensions and objects as thick as 8 inches deep, making it the scanner of choice for thousands of situations. The lens used is "the difference between painting with a fine brush or with a roller," states an expert in the field. Another feature allows for safe scanning of objects such as fragile textiles, rare manuscripts, drawings or other delicate objects. In addition, objects can be lighted with "texture mode" to reveal a depth, detail, and clarity in the final file and print that previously was not possible. This feature is especially important when scanning paintings or other objects with heavy texture.

All of the artists were awed by the quality of the work which was demonstrated. Mary and Robert emphasized that because of the large size of the scanner, several prints can be scanned together and still considered a single scan. You may email [heartlandprintworks@gmail.com](mailto:heartlandprintworks@gmail.com) to talk to them, schedule a visit, or request a pricelist.



### Betty Boyle's recipe for FORGOTTEN KISSES

2 EGG WHITES.....1/8 TEAS. SALT.....1/2 TEAS.CREAM OF TARTAR.....3/4 C.SUGAR.....1/2 TEAS.VANILLA (I sometimes use almond flavoring).....1 6oz. PKG.CHOCOLATE CHIPS

Preheat oven to 350 degrees. Beat egg whites until fluffy. Add salt and cream of tartar; beat. Slowly add sugar, beating constantly until glossy. Add vanilla. Fold in chocolate chips and drop from teaspoon onto greased cookie sheet. Put into 350 degree oven and **immediately turn off the oven**. Leave in the oven for at least 2 hours. Betty adds a very few drops of food color before adding the chocolate bits because at Christmas time they look nice in red or green, or pink for Valentine's Day. Yield: 4 dozen

## Painting with Paper and Painting Wet with Dry Media

A workshop by **Peggy Brown** June 19, 20, 21, 2008

9am-4pm , St. Agnes Church, Nashville, Indiana

### The Workshop

"**Painting with Paper**" is what Peggy Brown calls an "accidental" technique. It grew out of mistakes made while working with watercolor collage. As in traditional watercolor painting, paper is used as the support for the painting. However when painting with paper, paper is also used as a tool and as a medium. Paper becomes a tool when pieces of paper are used to apply pigment, control pigment, and help design the image. Paper becomes a medium when the papers used in the painting process are recycled in a collage. The primary medium is transparent watercolor used in the traditional ways of wet in wet, followed by glazes. Graphite, colored pencils, and a few other media add texture and depth and help define the design. The primary purpose of this workshop is to encourage the student to explore and try new techniques while keeping in mind the truly important elements of a painting, which are design, drawing, and originality



Misbehavin'

"**Painting Wet with Dry Media**" is another accidental technique, discovered while trying to jazz up a dull watercolor painting. This technique features media usually applied to dry paper, including graphite, charcoal, pastels, and conte crayons. To begin, dry media are applied wet, alone or along with transparent watercolor, to a wet piece of paper. The resulting beginning is then developed into either a realistic or non-objective painting as dictated by the student's preferences and mood. Peggy Brown can only teach HOW TO PAINT (technique). WHAT TO PAINT and WHY PAINT must come from within each artist, and she hope to encourage each of you to explore not only new and different techniques, but also most importantly the artist within YOU.



This Moment II

### The Instructor

Peggy Brown is primarily a self-taught painter. She has won numerous awards for her watercolor paintings and watercolor collage including "Best of Show" in Allied Artists of America, The National Watercolor Society, and Watercolor Society of Indiana. She is a signature member of many several regional organizations. Peggy has been judge and juror for national exhibitions. She began teaching watercolor in a continuing education class at Indiana -Purdue University Fort Wayne, Indiana Campus in the late 70's. She has taught workshops on a limited basis in the Midwest and Eastern US for the past 20 years.

### The Location

St. Agnes Church 1008 McLary Road, Nashville, Indiana Phone: 812-988-2778

In Nashville at the intersection of S. Van Buren St/ Indiana 135 North, turn north on Van Buren to West Main St. Turn left on W. Main St., and where the street name changes to Helmsburg Road, continue going. Turn left at W. McLary Road and go up the hill to church parking on the right. The church is only about 1/2 mile from center of town.

### Peggy Brown Workshop Registration Form June 19-21, 2008

Name \_\_\_\_\_ Phone \_\_\_\_\_

Address \_\_\_\_\_ City \_\_\_\_\_ State \_\_\_\_\_ Zip \_\_\_\_\_

Email: \_\_\_\_\_

#### 3 Day Workshop Cost:

\$200 for WSI members

\$210 for non-members (with \$10 applied to Membership Dues if WSI is joined in 2008.)

#### Please enclose full payment.

Signature: \_\_\_\_\_

#### Mail Registration to:

Watercolor Society of Indiana  
4181 E. 96th Street, Suite 200  
Indianapolis, IN 46240

Questions? Call: 317-814-6194

Email: wsiemail@ori.net

## Opportunities for Artists

Hamilton County Artists' Association Show Schedule for 2008: Birdie Gallery hours: Thur, Fri, Sat. 10 AM-5PM. Welcome Spring, March 6, April 27. Special Photography Show By the Riviera Camera Club, March 15-29. First Anniversary Show, May 1-June 27, Opening Night, Friday May 2, 6-10 pm, Family Day, Sat. May 3 10am-5pm. Summerfest July 3-August 29, Opening Night, Friday July 9, 6-10 pm. Impressions of Nature Sept. 4-Nov. 28, Opening Night December 5, 6-10pm. More info at website: <http://www.hcaa-in.org>.

The new CrazyLake Art House Gallery that will be opening in April has formed a Plein Air Painting group. These artists will meet monthly to paint various locations in Hancock County and will have an annual exhibit in December. More information is available on the CrazyLake website at [www.crazylake.com](http://www.crazylake.com).

The Rising Sun Festival of Fine Arts and Crafts will be held Sept. 14-15. Application deadline is May 1, 2008. For information visit [www.zapplication.org](http://www.zapplication.org).

Judi Betts Workshop, Aug., 4-8. The Bloomington Watercolor Society began about 6 years ago with 8 to 10 members. We met to paint and share painting techniques and styles once a month. We have grown each year, and now have 50 paid members. Membership is \$25 a year. We have members from nearby counties. It is not a juried club, and we encourage beginning painters to join. Our goal is to educate, and plein air paint in the summer, fall, and spring. We have one one-day workshop a year with a visiting professional artist. This year we have expanded our programming to include Judi Betts. There is a \$75 reservation fee. For further information please call Jeanne Dutton, 812-331-1628 or Jacki Frey 812-320-6745.

The Aqueous Open of the Pittsburgh Watercolor Society will be Sept. 26– Oct. 24. The deadline for submission is July 1, 2008. For information contact: William Perry 724-452-6046.

The Glenville, IL Art League will hold its 54th annual juried Outdoor Art Fair. For information call 847-724-4007 or email [glenviewartleague@att.net](mailto:glenviewartleague@att.net).

Workshop by Jim Cantrell. Painting the Figure with Jim Cantrell July 25--27th, 2008, Dates: July 25th, Friday evening 7pm, a slide lecture by Jim Cantrell at TAF in the WVWS room, July 26th & 27th workshop, Saturday & Sunday 9am--4pm in the WVWS room at Tippecanoe Arts Federation, Lafayette, IN. Price: WVWS Members \$180, Non-members \$190. Workshop Limit: 15 participants. Contact: Kathryn Clark, 765-563-3210, [kclark@twinrocker.com](mailto:kclark@twinrocker.com).

### It's New! It's Awesome! WSI Website

[www.watercolorsofindiana.org](http://www.watercolorsofindiana.org)

WSI has a new website. The look is modern, and the site organization is great. It was designed by Board Member Marie Stonestreet. Marie was kind enough to donate many long hours to this project, and we are very grateful.

It still has the these features:

- **Calendar of Events**
- **Prospectus for Exhibits**
- **Current Juried Exhibit Paintings**
- **Membership Application**

plus the following NEW features:

- **Newsletter Archive**
- **Workshop Registration Forms**

Marie is a website designer. If you are interested in talking to her about your own website you may contact her at: 317-690-2481 or [mstonest@comcast.net](mailto:mstonest@comcast.net)

## Education Outreach - Promising Artist

Kate Oberreich was key to the success of the retirement activities for Marilyn Derwenskus at Ball State University. Kate is now gearing up, creating new work, and preparing her studio for this year's Stutz Artists Open House (Apr. 25-26). Additionally, she is working with other Stutz artists to create the Summer/Fall class schedule for STUTZARTSPACE, where she works as the Manager of Educational Services.

Kate will also be participating in a group show at the Dean Johnson Gallery on Massachusetts Ave. in Indianapolis this summer. Watch for dates so you can see some of Kate's work.

## American Frame



Please remember to designate WSI as the recipient of 5% of your American Frame purchase.

**This money is used  
for the Juried Exhibit Awards Fund!**

Watercolor Society of Indiana Annual Workshop

**Betsy Dillard Stroud, AWS, NWS**

**September 9 - 13, 2008**

**Indianapolis Art Center, 9 - 5**

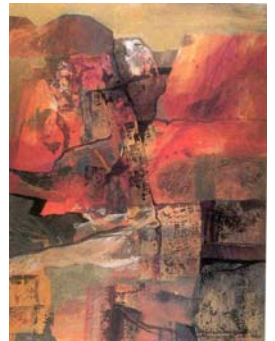


Betsy Dillard Stroud began painting at the age of eight when an insightful uncle gave her a set of oils. Now, as a painter and writer she resides in Scottsdale, Arizona. She was educated in Virginia with a B. A. in art from Radford College and an M. A. in art history from the University of Virginia. She had her first one-woman show in 1983 at Artisan's Studio Gallery in Dallas and has pursued a painting career since that time. Life changes brought her to Arizona in 1996, where the vibrancy and spirit of both the Southwest and the East continue to influence her work.

**When asked what kind of artist she is, Stroud replies, "As a former art historian aware of the fallacies of labeling, I'm a realistic, abstract, impressionistic, expressionist who uses color and movement as a major tool of self-expression."**

Stroud has had nineteen one-woman exhibitions and has exhibited in over 140 state, regional, and national shows. She has won nineteen major awards, including the American Watercolor Society's High Winds Medal (1992), and the Artist Magazine Award (1995.) A workshop teacher since 1987, she conducts workshops around the country and also teaches part-time at the Scottsdale Artist School in Scottsdale, Arizona and the Schemer Art Center in Phoenix. She is the author of one published biography: Coming Hither—Going Hence, and for over a decade has written for many art publications.

The 2008 Workshop will be **Experiment in Ecstasy**: Abstract Painting with Phenomenal Artistic Results. Betsy Dillard Stroud describes this as a mixed media workshop: watercolor, acrylics, gesso, and collage. Students will stamp, layer, pour, draw with aquatics, water-soluble crayons, and pencils. It will include a relief painting and making collage paper. Students will work transparently, and work opaquely. There will be talk about content, design, color, and experiment with different approaches, concepts, and techniques emphasizing abstraction, sometimes approaching abstract realism. Each day will bring new information combining traditional wisdom with modern ways of looking at painting. The work will be bold and subtle. Come with an open mind!



**2008 Betsy Dillard Stroud Workshop Registration Form**

Name \_\_\_\_\_ Phone \_\_\_\_\_

Address \_\_\_\_\_ City \_\_\_\_\_ State \_\_\_\_\_ Zip \_\_\_\_\_

Email: \_\_\_\_\_

**Cost is \$425 for Members, \$435 for Non Members**  
**Enclosed is my deposit of \$100 to reserve a seat in the Betsy Dillard Stroud Workshop. I understand the balance is due by August 1, 2008.**

**Mail Registration to:**  
Watercolor Society of Indiana  
4181 E. 96th Street, Suite 200  
Indianapolis, IN 46240

Signature \_\_\_\_\_

Call 317-814-6194 or email [wsiemall@ori.net](mailto:wsiemall@ori.net) with questions.

**WATERCOLOR SOCIETY OF INDIANA**  
**2008 NON-JURIED MEMBERSHIP EXHIBIT June 7 – June 28**  
**One America Atrium Lobby**

**ELIGIBILITY**

All WSI members who have paid 2008 membership dues may register ONE watermedia painting for exhibition. **All paintings must be registered in our office by May 30, 2008.** Non-registered paintings will NOT be accepted at the One America building. All paintings executed and presented in accordance with the rules will be exhibited unless, in the opinion of the Exhibitions Committee or OneAmerica, subject matter may be viewed as objectionable by the general public. Paintings exhibited in prior juried shows ARE eligible. **PAINTINGS MUST BE FOR SALE.** Call the WSI office (317-814-6194 x 150) with questions.

**CALENDAR**

**Fri. May 30** – Deadline to register painting. It must be postmarked by May 28th.  
**Wed. June 4**– Caterer’s deadline – we must provide a head count for lunch. Include entry form, \$15 check for entry fee and optional luncheon fee or demo fee. **The demo by Becky Taylor is free if you have paid for lunch.**  
Send form & fees to: Watercolor Society of Indiana, 4181 E. 96<sup>th</sup> St., Suite 200, Indianapolis, IN 46240.  
**Sat. June 7** - 10:00 a.m. to Noon - Deliver paintings to One America (North Entry)  
**Please deliver Paintings larger than 22 x 28 x by 11 a.m.**  
12:00 - 1:00 p.m. - Luncheon in Cafeteria  
1:00 - 1:30 p.m. - Brief General Meeting – Door Prizes  
1:30 - 3:00 p.m. - Watercolor Demonstration by **Becky Taylor**  
**June 9- June 27**- Show open to public during building hours: Mon-Fri. 8 a.m. - 5 p.m.  
**Sat. June 28** - 10:00 a.m. - Noon - **Pick-up paintings** unless you have been notified of a sale.

**RULES**

- ◆ A minimum of seventy-five percent (75%) of the entry must be watercolor material. If desired, the balance of the entry may be pastel, charcoal, ink and collage (e.g. photos, computer art, fabric, metal foil, etc.) The decision of the Exhibitions Committee is final in accordance with these rules. Because “wall” space is limited, overall frame size is limited to 32” x 40” or less.
- ◆ Work must be matted and framed under glass or plexiglass. All work must be ready to hang with flat hangers and wire. No damaged or warped frames will be accepted. Plexiglass is preferred in metal frames larger than 18”x24”. The overall look of the

**2008 MEMBERSHIP EXHIBIT ENTRY FORM**

Artist \_\_\_\_\_  
Phone \_\_\_\_\_  
Title of Painting \_\_\_\_\_  
\_\_\_\_\_  
Painting Price (**Painting Must be For Sale**) \$ \_\_\_\_\_

**Registration Fee & Luncheon Reservation(s)**  
# \_\_\_ Lunch \$18 each Member \$ \_\_\_\_\_  
# \_\_\_ Lunch \$20 Non-member \$ \_\_\_\_\_  
**Demo only: \$10** (No Lunch) \$ \_\_\_\_\_  
Demo is included with the luncheon fee.  
**Painting Entry Fee \$15.00** \$ \_\_\_\_\_  
**Total Enclosed:** \$ \_\_\_\_\_

Make check payable to WSI. Fees and form must be in our office by Friday, May 30, 2008. Mail to: **Watercolor Society of Indiana**  
4181 E. 96<sup>th</sup> Street, Suite 200  
Indianapolis, IN 46240

Signature (**REQUIRED**) \_\_\_\_\_  
**Signature indicates acceptance of the rules.**

**WSI LABEL FOR PAINTING**  
**2008 Membership Show**

Artist \_\_\_\_\_  
Title \_\_\_\_\_  
Phone \_\_\_\_\_  
Price \$ \_\_\_\_\_  
**Painting must be for sale.**

## **DELIVERY OR PICK-UP ASSISTANCE**

If you need assistance with delivery of your painting on June 7th or with pick up of your painting on June 28th, contact the WSI Area Representative for your region of the state. If you live in Indianapolis and need help, please call an artist friend. **You will be charged \$25 each way if the office provides transportation.**

NORTH: Louise Cartwright 260-471-5188 [rcart471@aol.com](mailto:rcart471@aol.com)

SOUTH: Jeanne McLeish 317-831-8254 [burkettmcleish@earthlink.net](mailto:burkettmcleish@earthlink.net)

EAST: Ray Stevens 765-935-5927 [artist@globalsite.net](mailto:artist@globalsite.net)

WEST: Shirley Woolard 317-837-7607 [swoolard@kingswaychurch.org](mailto:swoolard@kingswaychurch.org)

If you would like to ship your painting, it should be crated and delivered to the WSI office by Fri. May 30. The WSI office will return your unsold painting to you in the same crate you shipped it to WSI. You must set up an account with FedEx or UPS so that all shipping costs will be paid by you. There will be a \$25 charge to you for transporting your painting to and from downtown. We encourage you to call your area representative above.

## **DELIVERY OF PAINTINGS TO One America ON JUNE 7th**

Between 10 am and noon, artists may drop off paintings at OneAmerica: Drive through Kissing Road on the north side of the building (off New York which is one-way EAST). If you would like a map, please call the WSI office. WSI volunteers take your paintings from the registration table to the atrium for hanging. Artists may then park in the surface lot across New York Street and return to the building to register their painting. **Parking on June 7th is paid by WSI.** Enter the parking lot from Illinois Street (one-way NORTH); you will enter the lot to your left as you're traveling north on Illinois. You may not enter the lot from New York Street. We have requested that the "arm" on the lot be up by 9:30 a.m.

## **RISK**

The Watercolor Society of Indiana will exercise diligent and reasonable care, but neither WSI nor One America will be responsible for loss or damage to any painting. By participating in the show, the artist assumes all risk and agrees to the rules and conditions of this prospectus. For security reasons, artists may not remove paintings from the show prior to the afternoon of Friday, June 27th. If your painting is sold, the office will call you and give you the opportunity to hang another.

## **2008 DUES PAID?**

Only current WSI members may enter this show. If you are not sure if your dues have been paid, contact Valerie Vogtner at 317-814-6194 X150 or email: [wsiemail@ori.net](mailto:wsiemail@ori.net).

## **UNCLAIMED PAINTINGS**

Unclaimed paintings will be returned to the WSI office. **WSI will charge \$25 for transporting a painting to or from the exhibit.** We will hold them until 12/29/08 at which time they will become the property of WSI.

**QUESTIONS?** Please call the WSI office at 317-814-6194 X150.

## **SALES**

- ◆ **Paintings must be for sale. The painting price should include a 30% commission to WSI.** All sales will be conducted through the WSI office. The office will notify artists and handle arrangements for delivery at the end of the show. Purchasers will make payment to the Watercolor Society of Indiana. A check, less the 30% commission, will be forwarded to the artist within 30 days.
- ◆ **Sold Paintings may be taken immediately by the buyer. The artist will be notified and given the opportunity to hang another painting at no additional fee.** If possible, the WSI office or the host/hostess working at the show will assist with replacement.
- ◆ Artists agree to furnish their social security number to the WSI office upon request if sale is \$600 or more. WSI must report to the IRS all sales or awards totaling \$600 or more during the year for any individual artist.
- ◆ If a painting is entered as FOR SALE at a certain price and sold prior to the opening, a **30% commission** should be paid to WSI. WSI requests a commission on exhibited paintings sold within a two-month period following the show if the sale is a direct result of the show.
- ◆ A list of exhibitors with artist/title/price and the WSI OFFICE phone number as the person to contact for purchase information, will be available to the public at the table in the Atrium Lobby.

## **OneAmerica**

The management company for OneAmerica reserves the right to refuse to hang a painting for any reason.